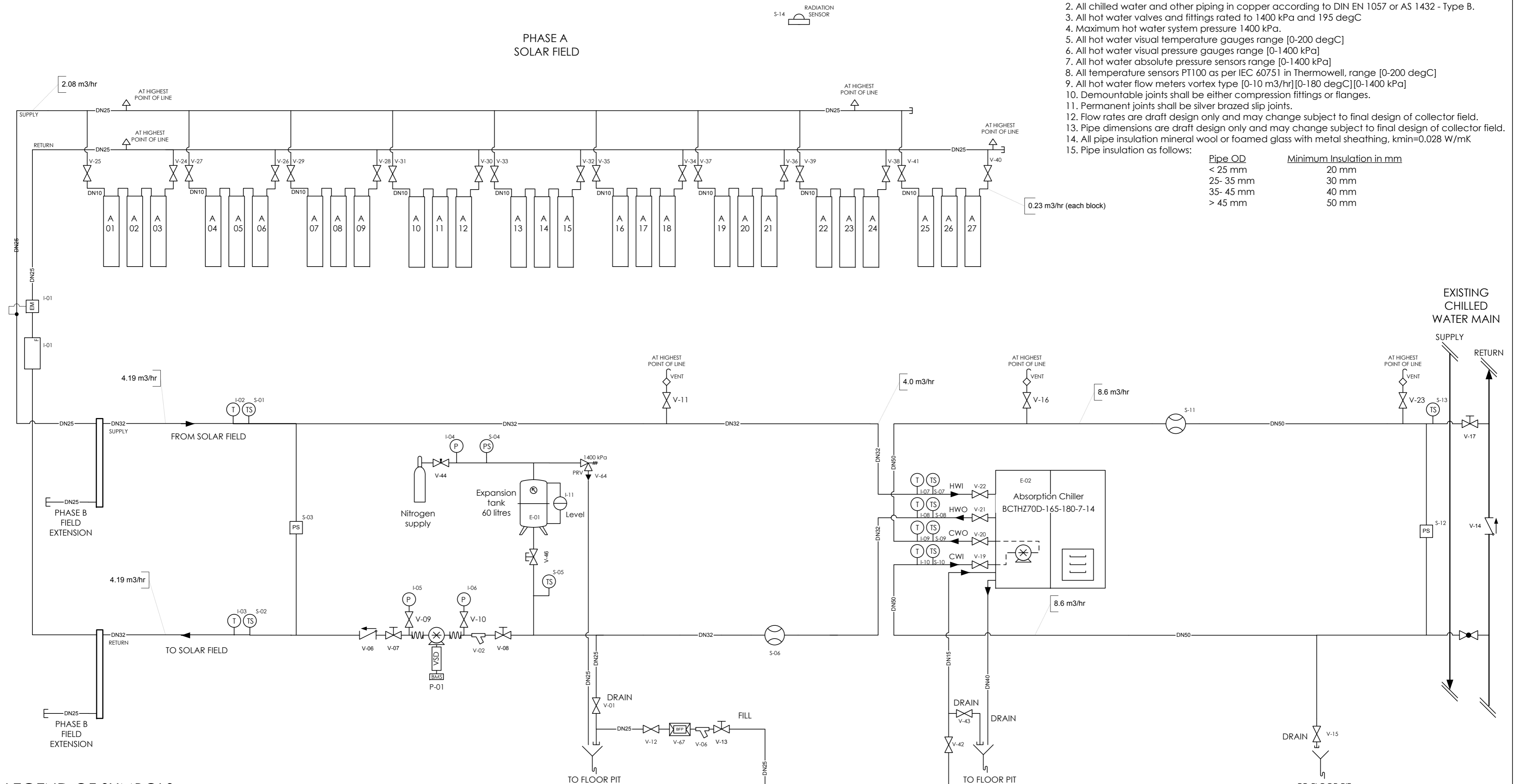


PHASE A  
SOLAR FIELD



DRAWING NOTES:

1. All hot water piping SEAMLESS CARBON STEEL PIPE SCHED 40 STD as per ASTM A106, API 5L & ASTM A53.
2. All chilled water and other piping in copper according to DIN EN 1057 or AS 1432 - Type B.
3. All hot water valves and fittings rated to 1400 kPa and 195 degC
4. Maximum hot water system pressure 1400 kPa.
5. All hot water visual temperature gauges range [0-200 degC]
6. All hot water visual pressure gauges range [0-1400 kPa]
7. All hot water absolute pressure sensors range [0-1400 kPa]
8. All temperature sensors PT100 as per IEC 60751 in Thermowell, range [0-200 degC]
9. All hot water flow meters vortex type [0-10 m3/hr] [0-180 degC] [0-1400 kPa]
10. Demountable joints shall be either compression fittings or flanges.
11. Permanent joints shall be silver brazed slip joints.
12. Flow rates are draft design only and may change subject to final design of collector field.
13. Pipe dimensions are draft design only and may change subject to final design of collector field.
14. All pipe insulation mineral wool or foamed glass with metal sheathing, kmin=0.028 W/mK
15. Pipe insulation as follows:

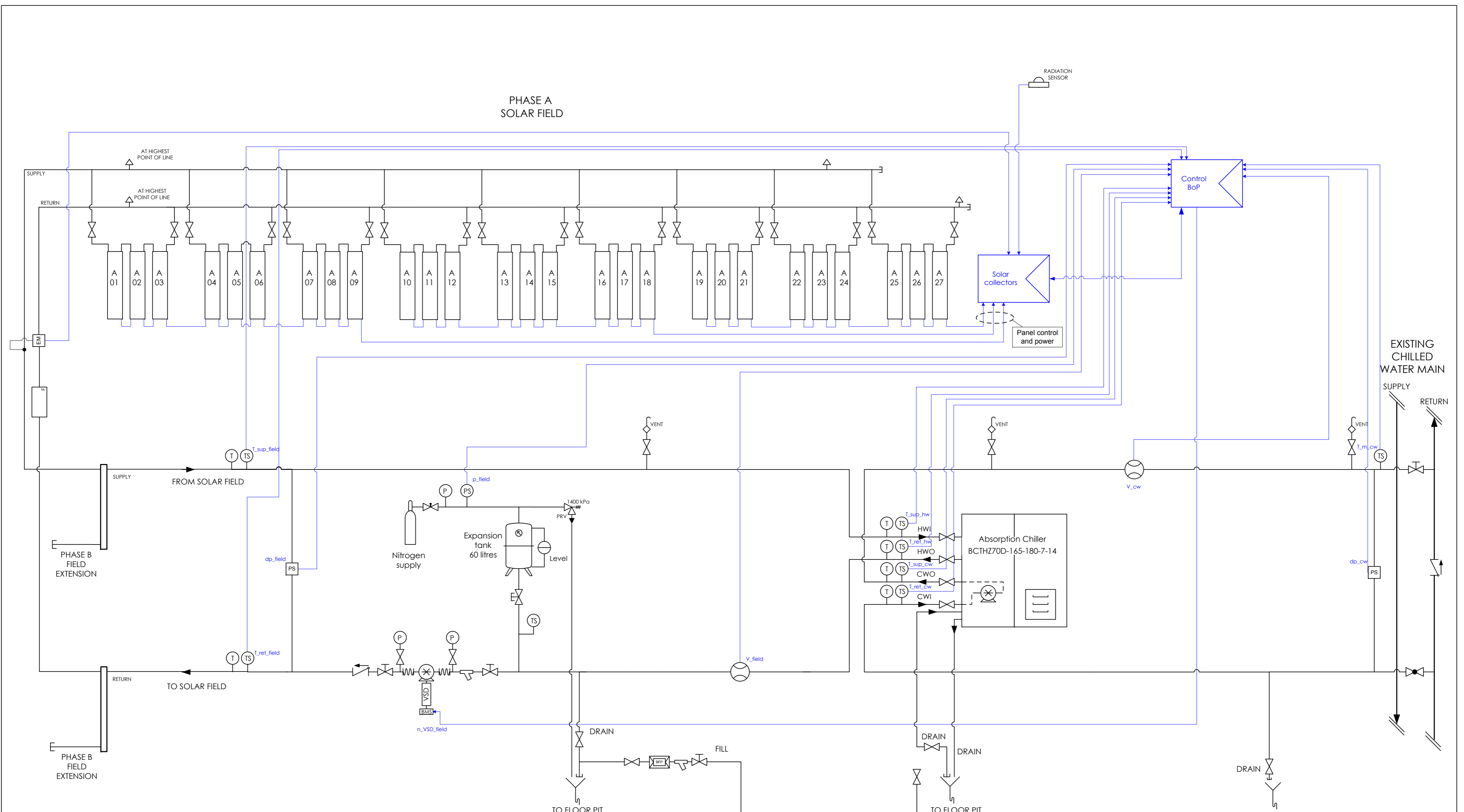
Pipe OD	Minimum Insulation in mm
< 25 mm	20 mm
25- 35 mm	30 mm
35- 45 mm	40 mm
> 45 mm	50 mm

LEGEND OF SYMBOLS

- |  |  |  |  |
|--|--|--|--|
|  |  |  |  |
|  |  |  |  |
|  |  |  |  |
|  |  |  |  |
|  |  |  |  |
|  |  |  |  |
|  |  |  |  |
|  |  |  |  |
|  |  |  |  |
|  |  |  |  |

All dimensions in millimeters.

Drawing:  PO Box 188 Balgowlah NSW 2093 Australia Mobile: +61 421 914 516 Email: info@solem-consulting.com Web: www.solem-consulting.com ABN 717 8385 4246	Project: <b>ADWEA building Solar Cooling System</b>	Client: Chromasun Inc. 1050 N 5 <sup>th</sup> St., Suite A San Jose CA 95112, U.S.A.	Title: <b>MECHANICAL SERVICES EQUIPMENT AND PIPING LAYOUT</b>
Created: 24-Aug-10 PK Modified:	Scale: NTS Size: <b>A2</b>	The information contained in this document is confidential and is not to be reproduced in any way or disclosed to a third party without the written consent of Solem Consulting. © 2010 Solem Consulting	
Approved:	Location: Abu Dhabi	Drawing no. CHS-SCD-2010-81-002	Rev. B



**LEGEND OF SYMBOLS**

- |  |  |  |  |
|--|--|--|--|
|  |  |  |  |
|  |  |  |  |
|  |  |  |  |
|  |  |  |  |
|  |  |  |  |
|  |  |  |  |
|  |  |  |  |
|  |  |  |  |
|  |  |  |  |
|  |  |  |  |

All dimensions in millimeters.

Drawing: <b>SOLEM CONSULTING</b> PO Box 188 Balgowlah NSW 2093 Australia Mobile: +61 421 914 516 Email: info@solem-consulting.com Web: www.solem-consulting.com ABN 717 8385 4246		Project: <b>ADWEA building Solar Cooling System</b>		Client: <b>Chromasun Inc.</b> 1050 N 5 <sup>th</sup> St., Suite A San Jose CA 95112, U.S.A.		Title: <b>MECHANICAL SERVICES CONTROL WIRING</b>	
Created	24-Aug-10	PK	Modified		Scale:	The information contained in this document is confidential and is not to be reproduced in anyway or disclosed to a third party without the written consent of Solem Consulting. © 2010 Solem Consulting	
Approved			Modified		Size:	A2	Location: <b>Abu Dhabi</b> Drawing no. <b>CHS-SCD-2010-81-001</b> Rev. <b>B</b>